

One Wythe Lane Williamsburg Brooklyn

4 Bedrooms

3 Baths

2 Powder Rooms

Garden

Roof Terrace

Private Parking

Interior Area

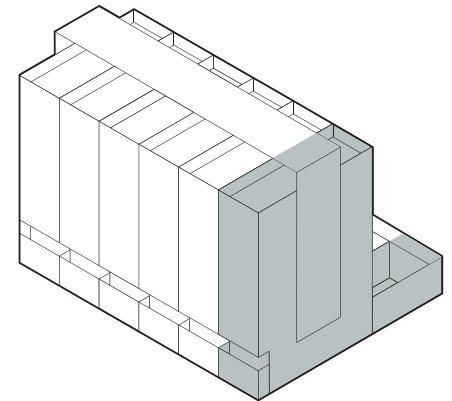
3,775 Ft² / 350.7 M²

Ground Exterior Area

417 Ft² / 38.7 M²

Roof Exterior Area

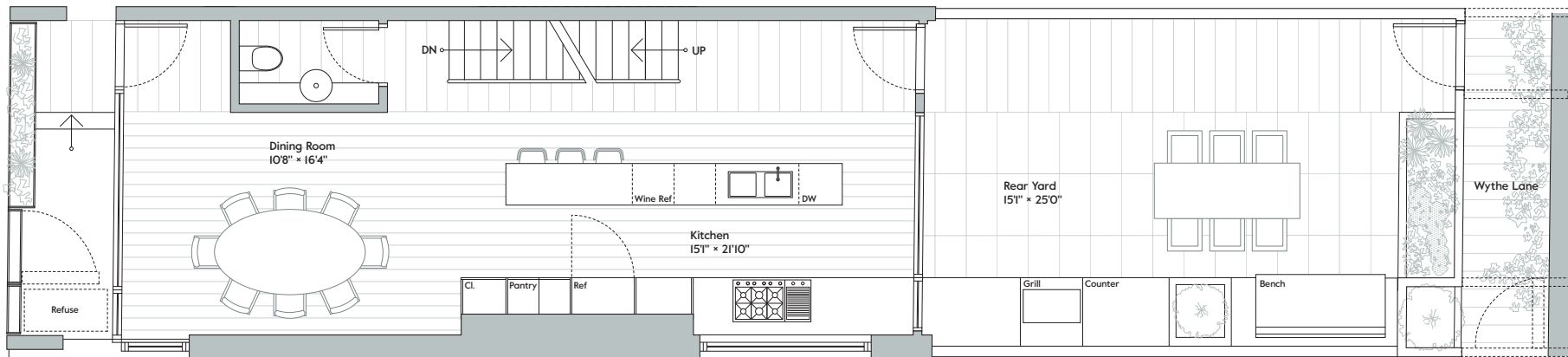
673 Ft² / 62.5 M²



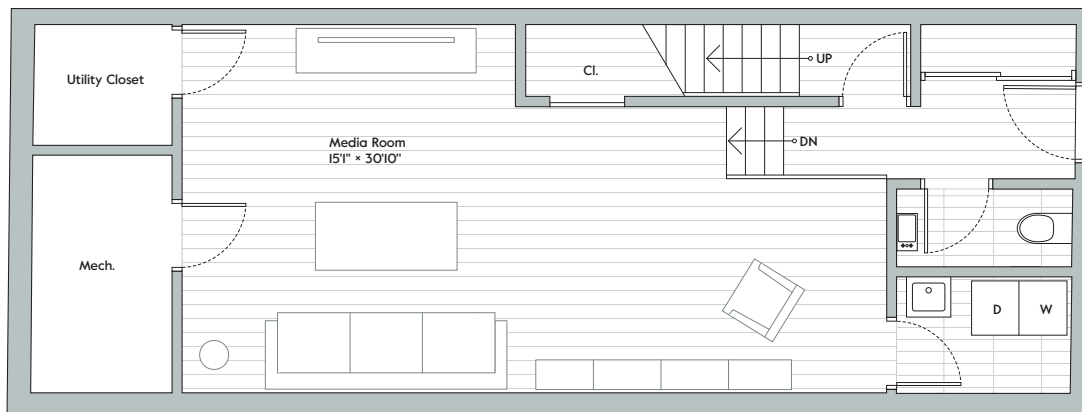
Dimensions and square footages indicated herein are approximate and may vary from "as built" conditions, which are subject to construction variances. Square footage noted on the floor plans exceeds the usable floor area and includes columns, shafts, chaseways and conduits. Building images are artist renderings, which are not intended to be actual depictions of the homes. Furniture depicted herein is for illustrative purposes only and is not included. Specifications are subject to change. The complete terms of the offering are set forth in materials to be distributed pursuant to a CPS No. 7 application filed with the New York State Department of Law, File No. HO14-0024, available from Sponsor: 59 SOUTH 4TH LLC, c/o KUB Capital LLC, 154 Spring Street, Suite 305, New York, NY 10012. This is an Equal Housing Opportunity.

One Wythe Lane

Williamsburg Brooklyn



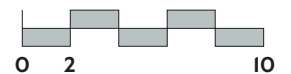
First



Lower Level

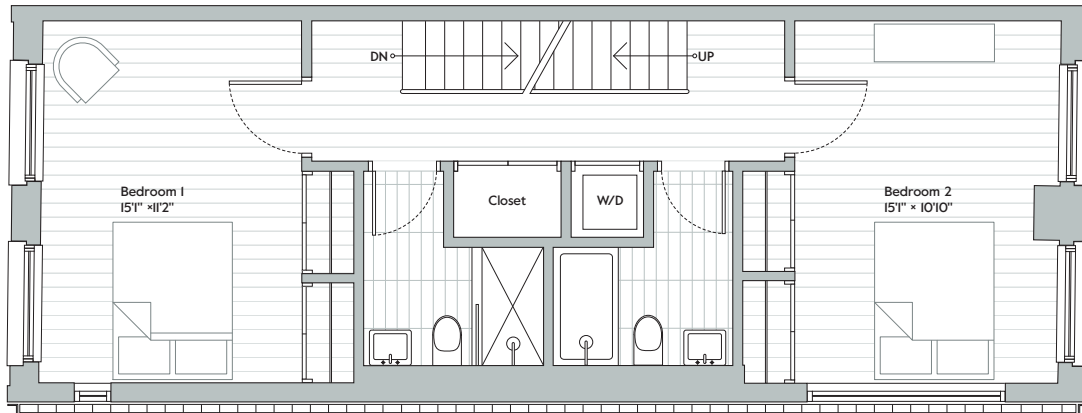


Scale
1/8" = 1'0"

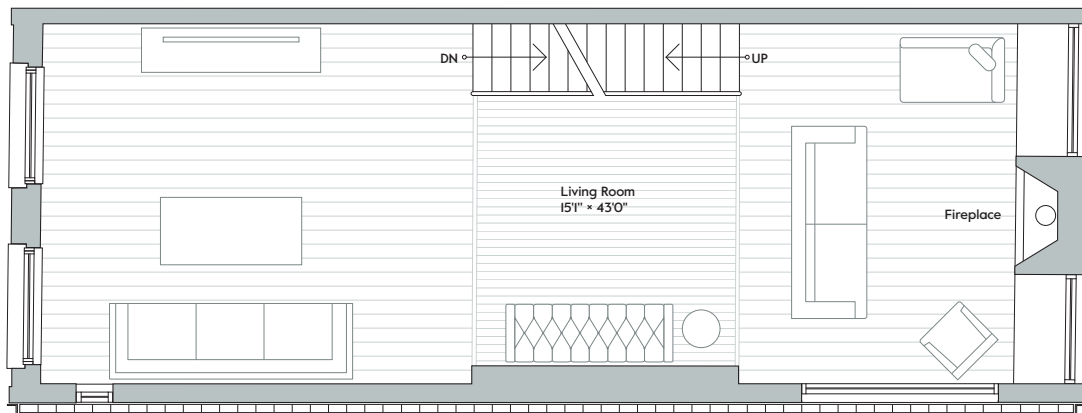


One Wythe Lane

Williamsburg Brooklyn



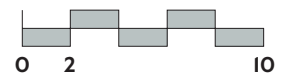
Third



Second

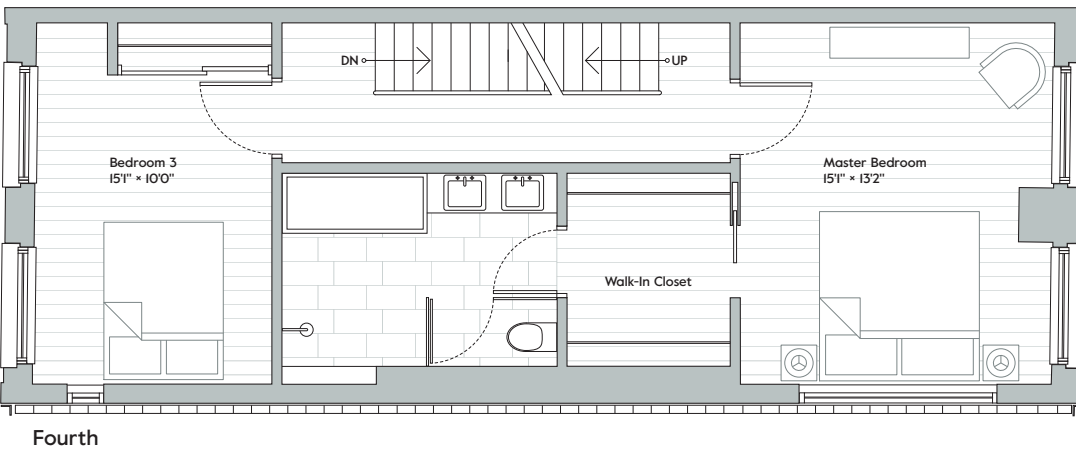
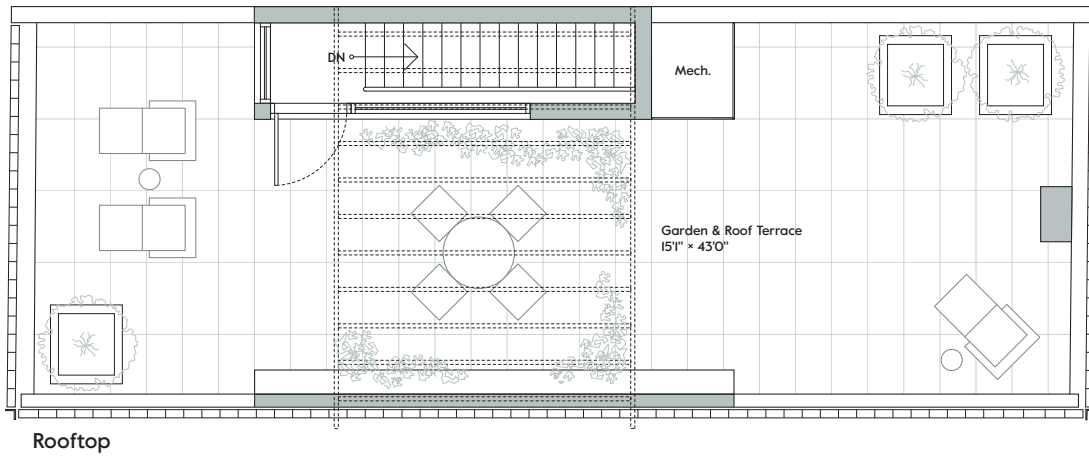


Scale
1/8" = 1'0"

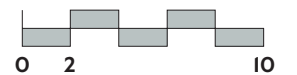


One Wythe Lane

Williamsburg Brooklyn

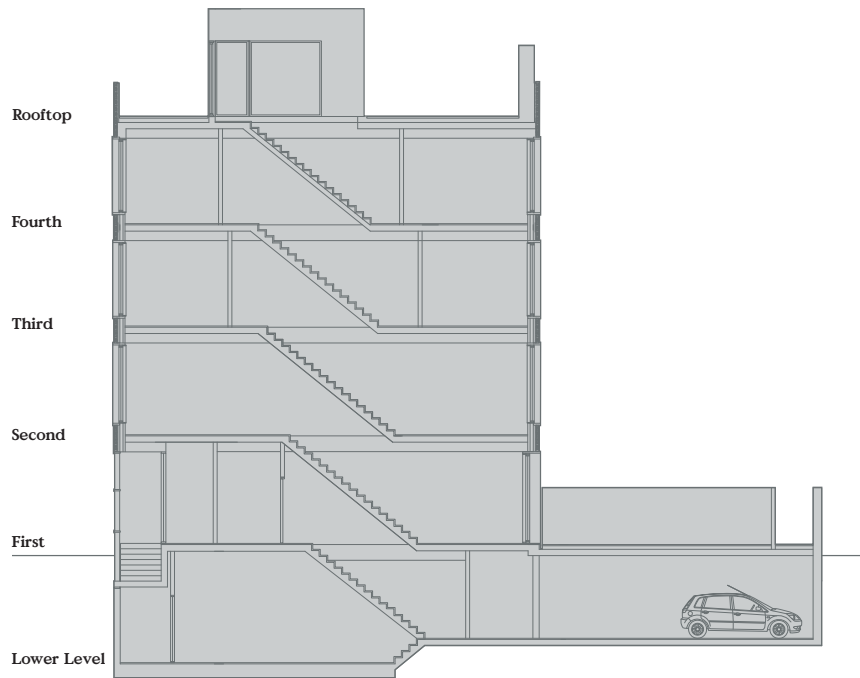


Scale
1/8" = 1'0"

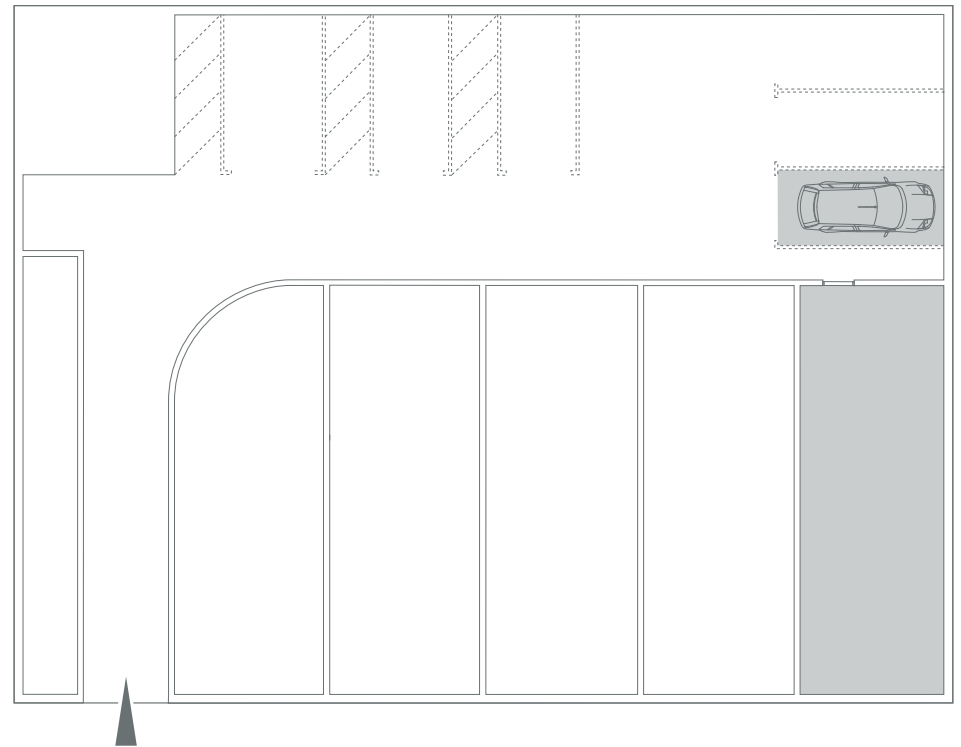


One Wythe Lane

Williamsburg Brooklyn



Elevation Section



Parking